



>1.4m



N°		
1	<0.6 m	18 m²

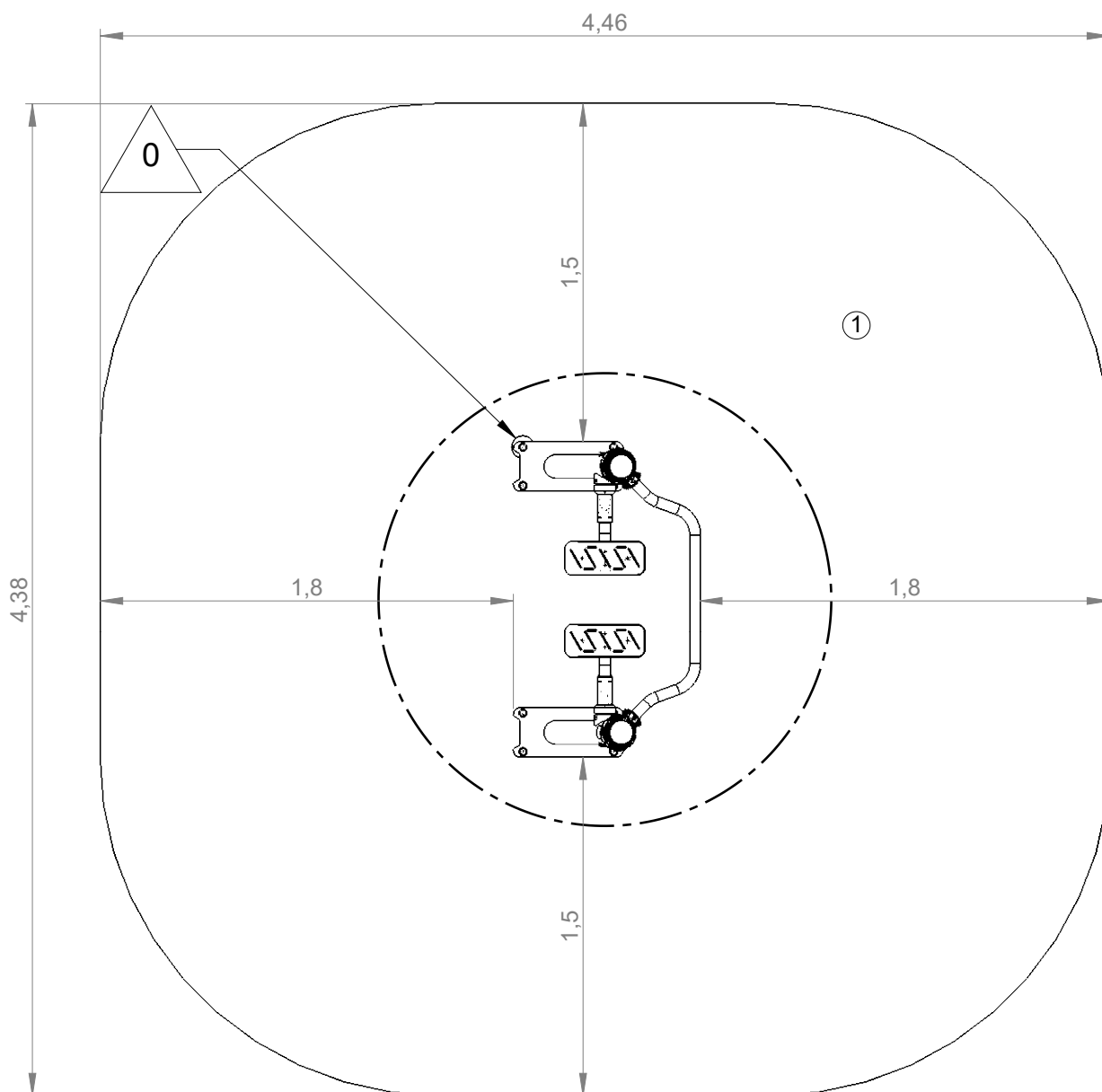
— Zone d'impact
Impact area
Area de impacto
Fallraum
Valzone

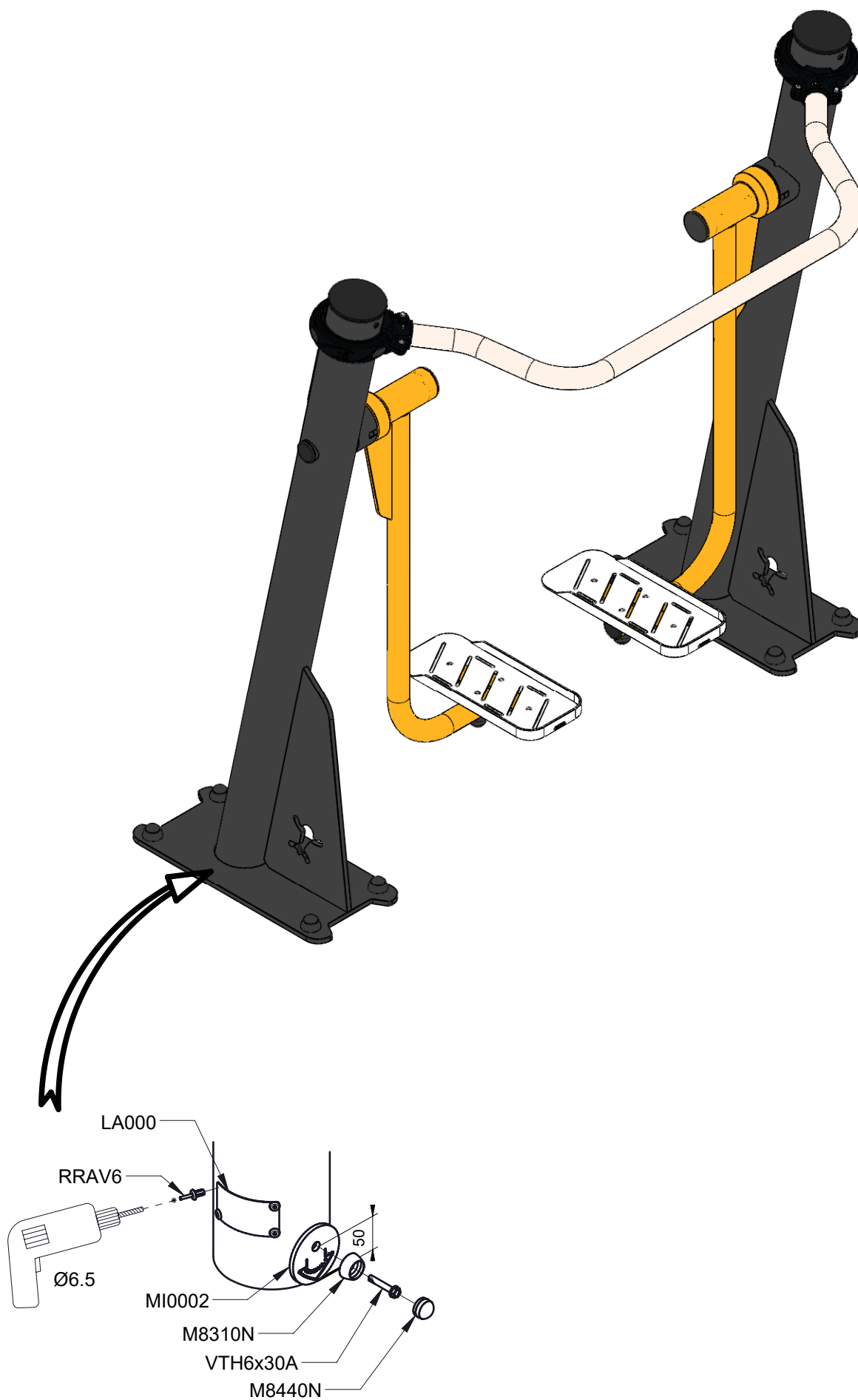


Point de référence
Setting out point
Punto de referencia
Bezugspunkt
Referentiepunt

- - - Espace libre
Free space
Espacio libre
Freiraum
Vrije ruimte

EN16630:2015

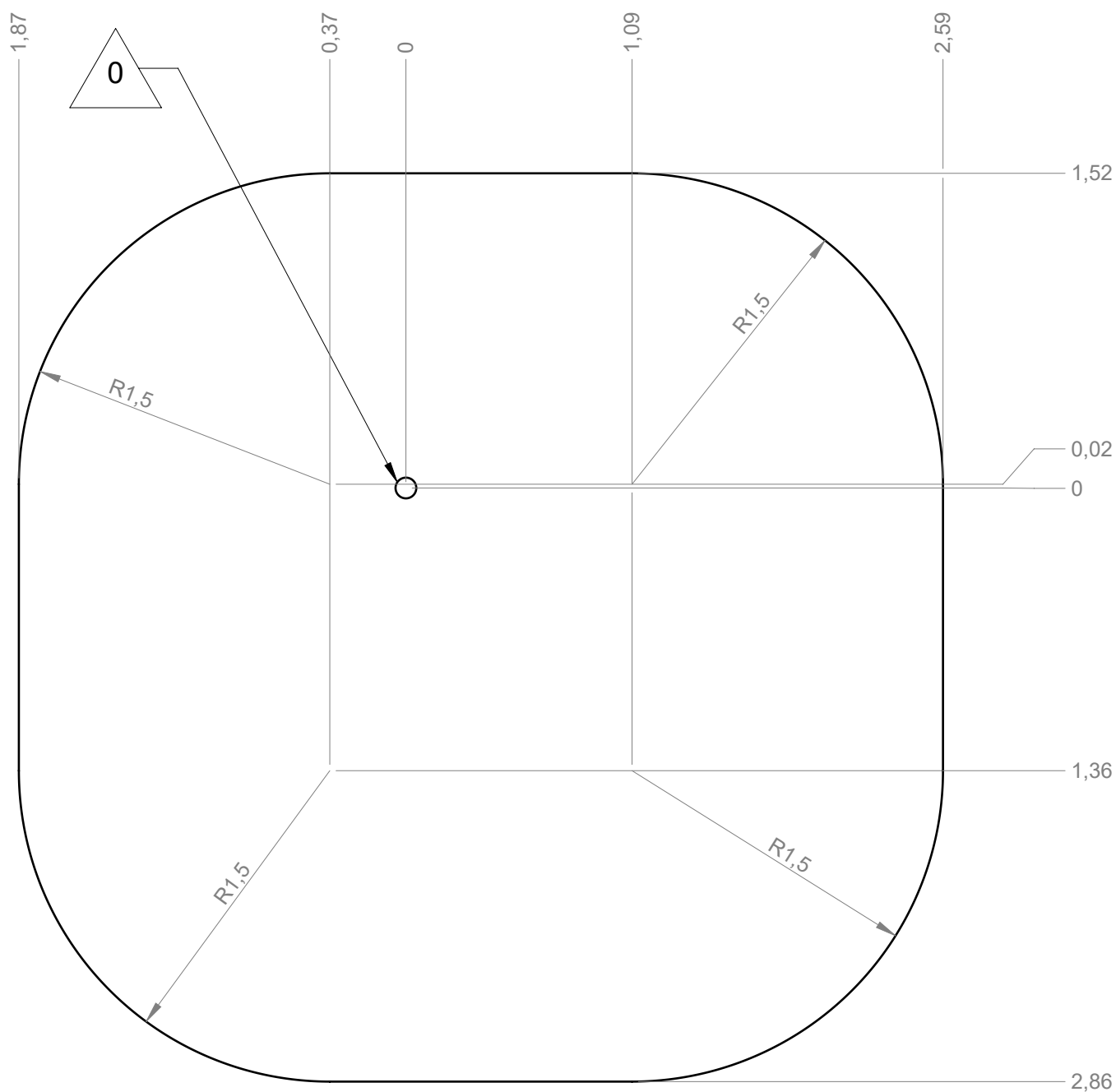




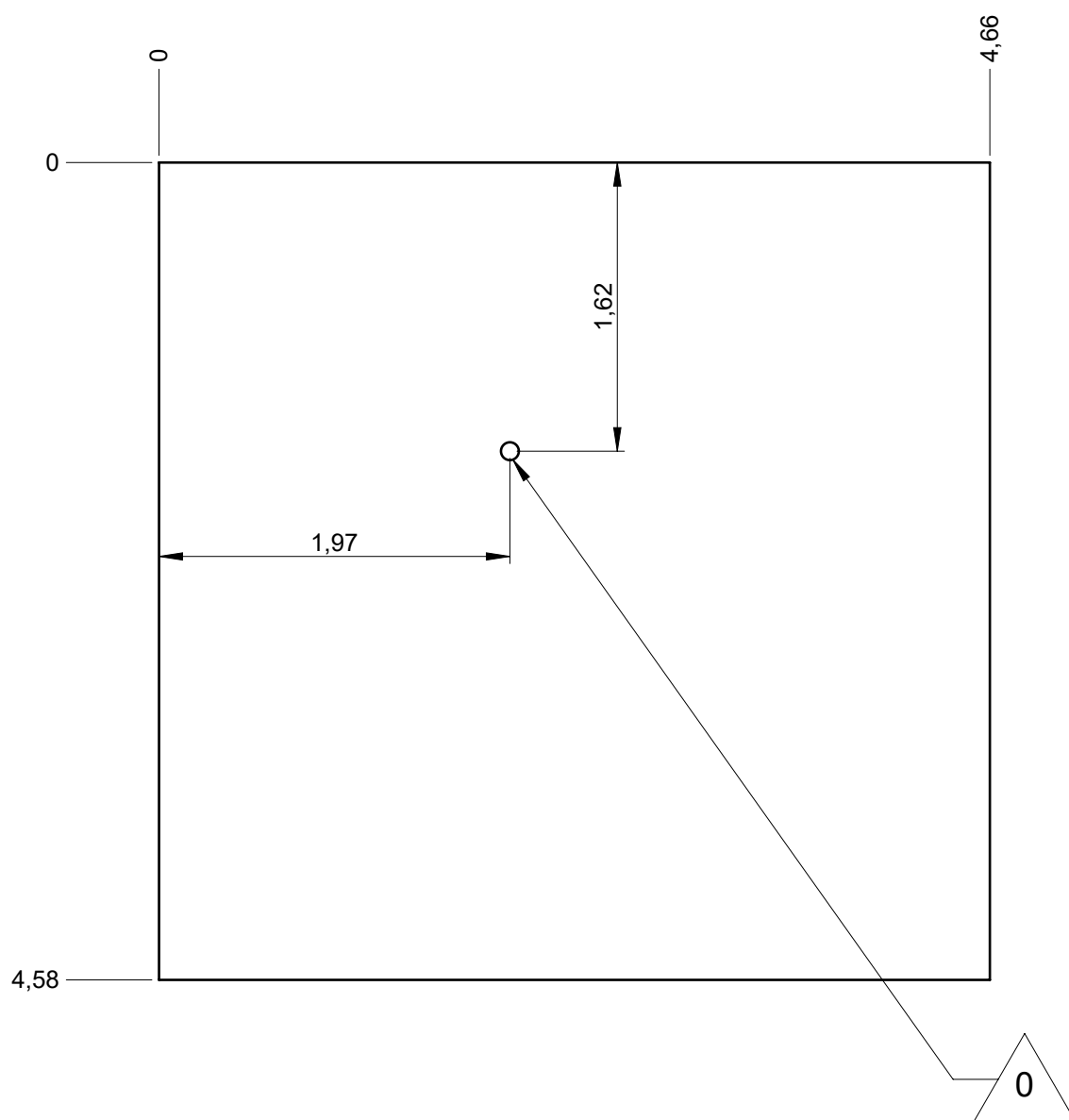
— Zone d'impact
Impact area
Area de impacto
Fallraum
Valzone

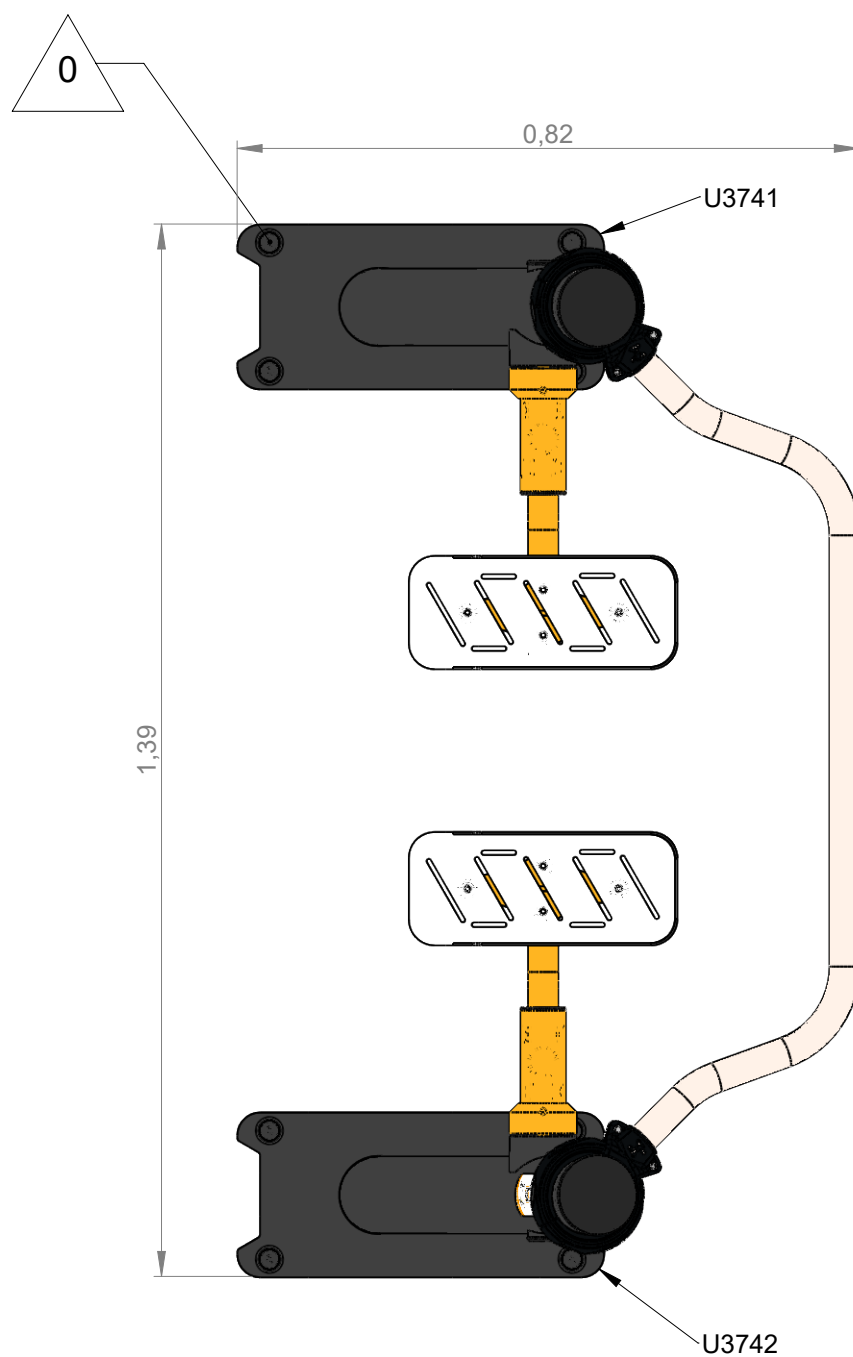
18 m²

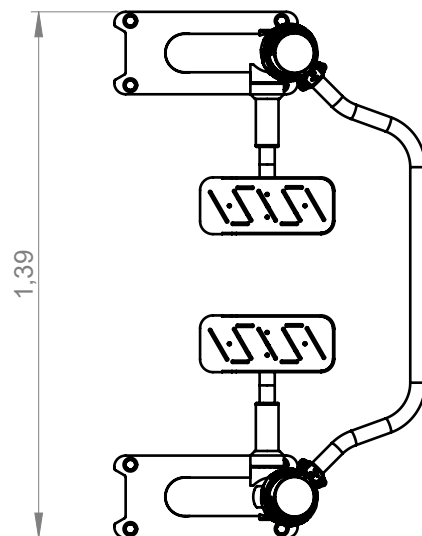
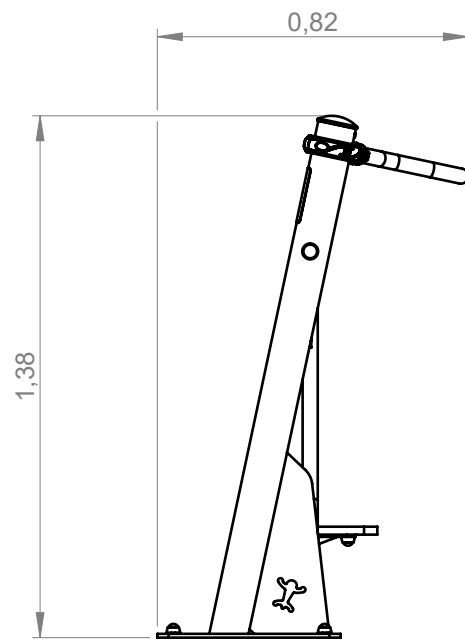
Sol souple
Wetpour
Caucho continuo
Synthetischer Fallschutz
Gietvloer



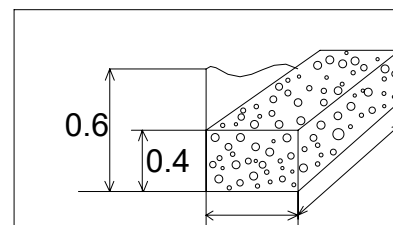
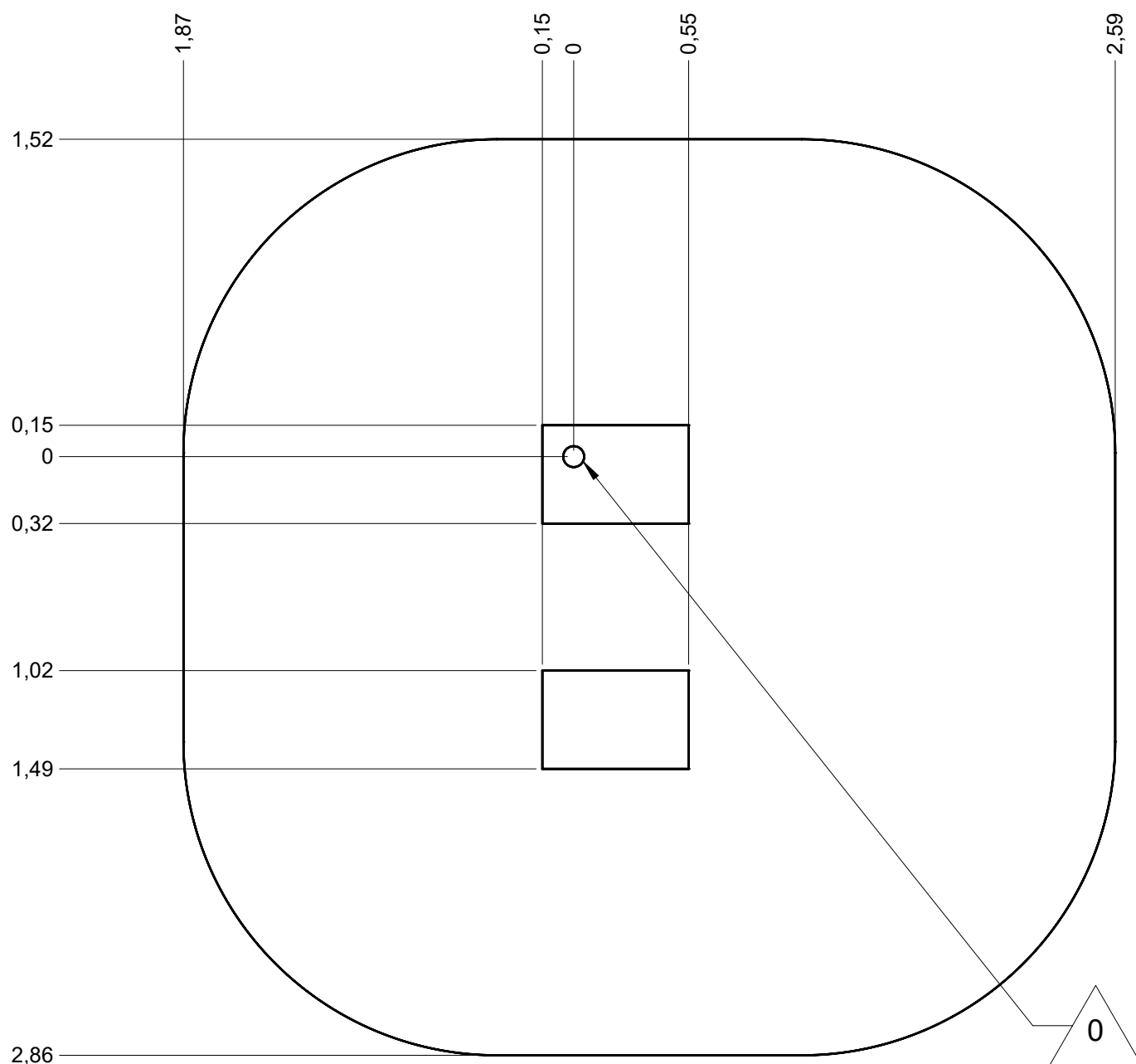
—	Sol fluent	
	Loos partucule material	18.5 m
	Arenero	
	Loses Bodenmaterial	21.5 m ²
	Los bodemmateriaal	

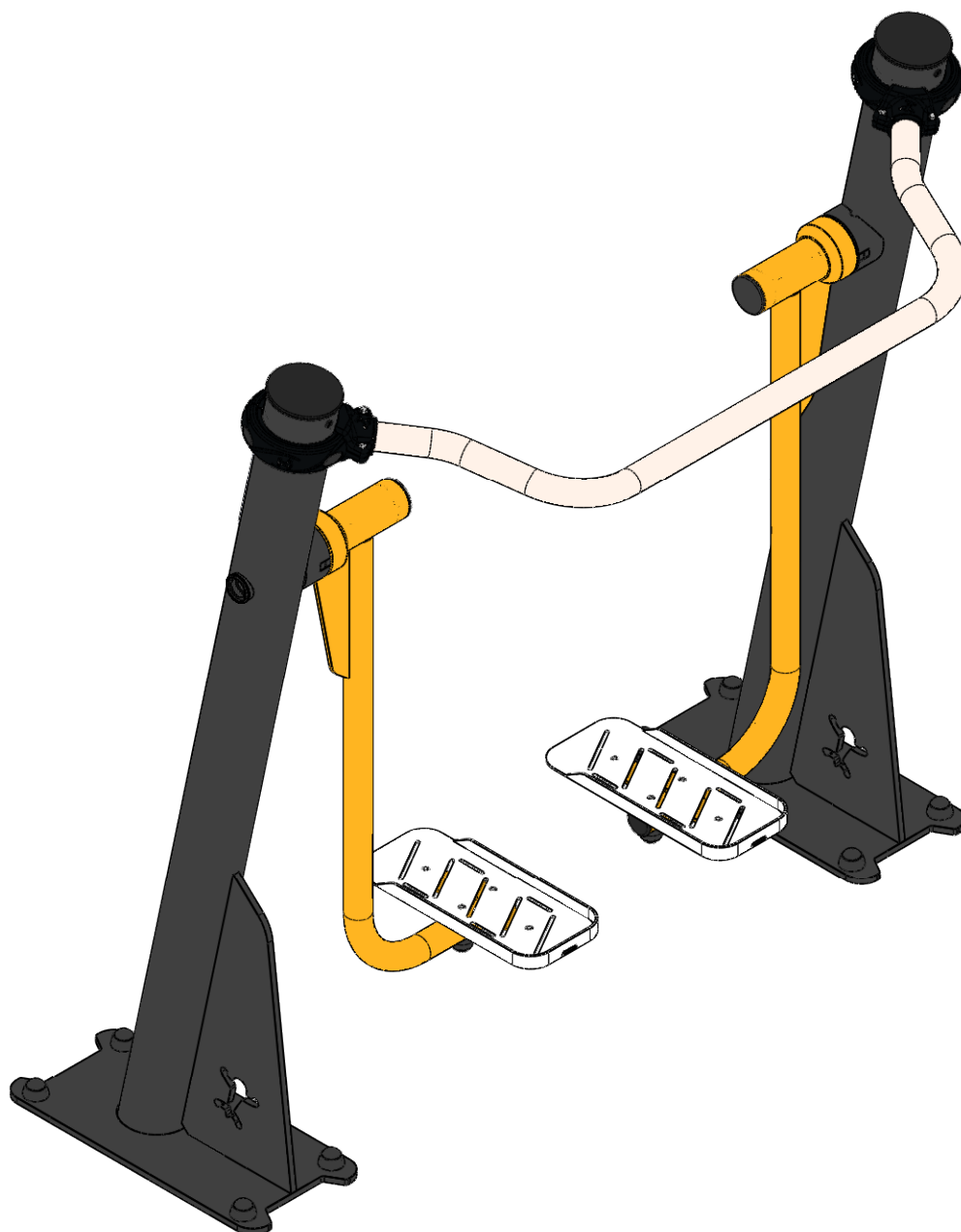




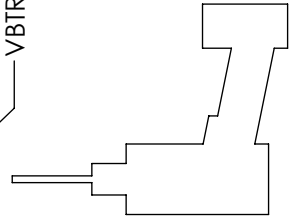
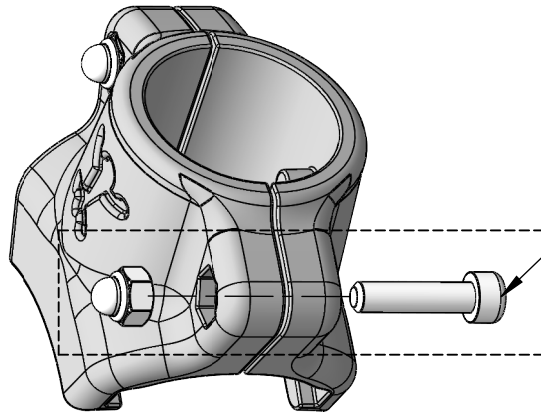
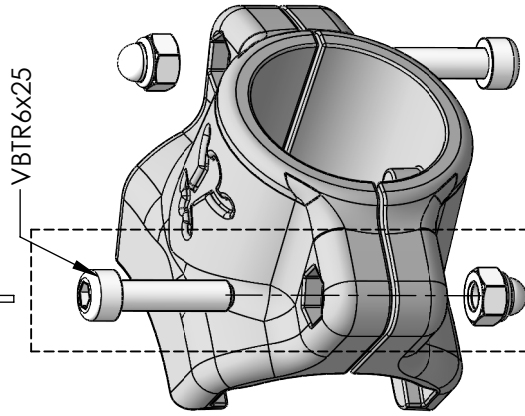
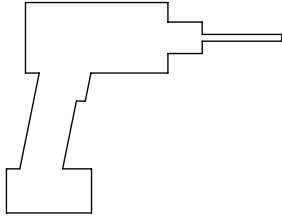


Implantation
 Footing plan
 Implantación
 Fundamentplan
 Funderingstekening

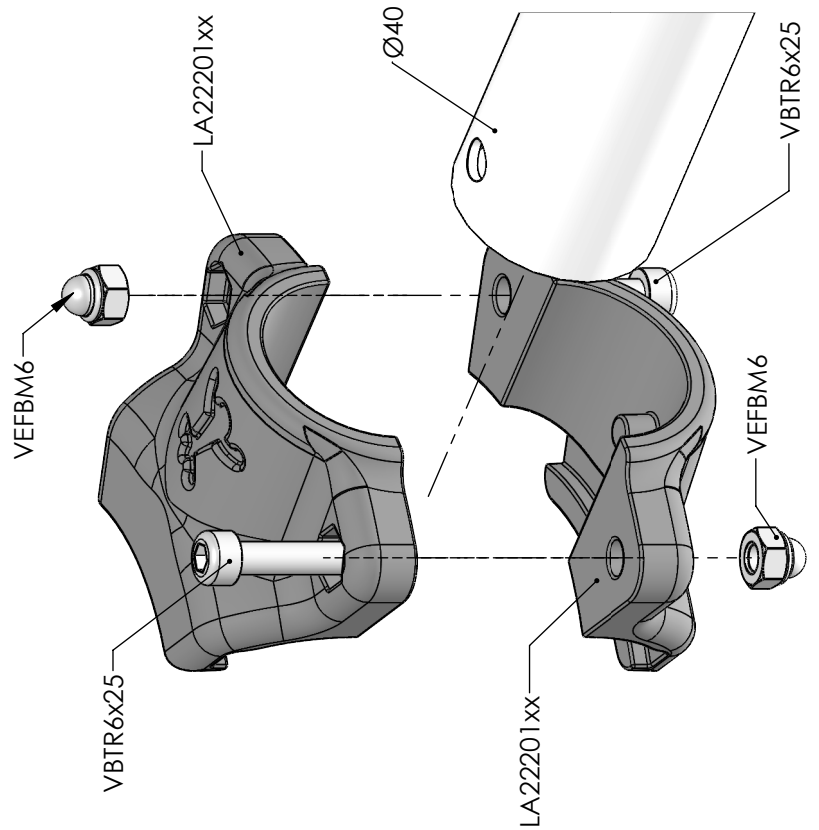
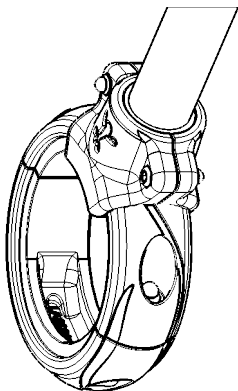
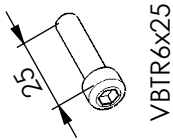
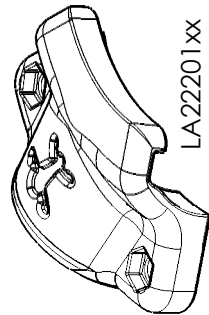


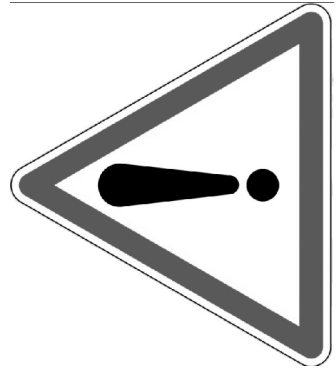
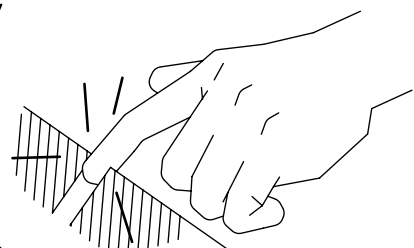
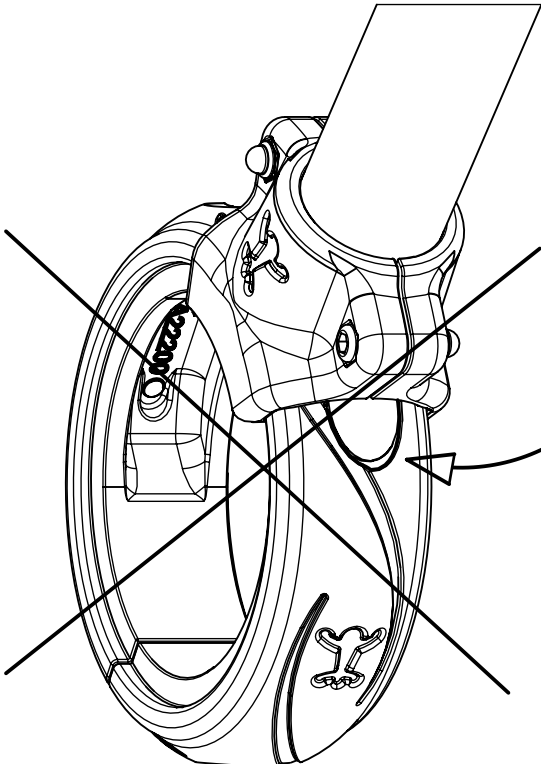
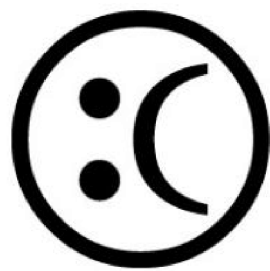


Réf	Qté
G3781A	1

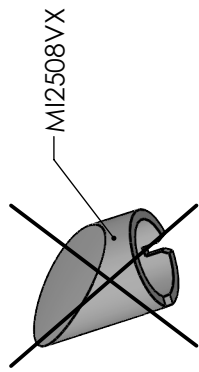
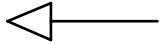
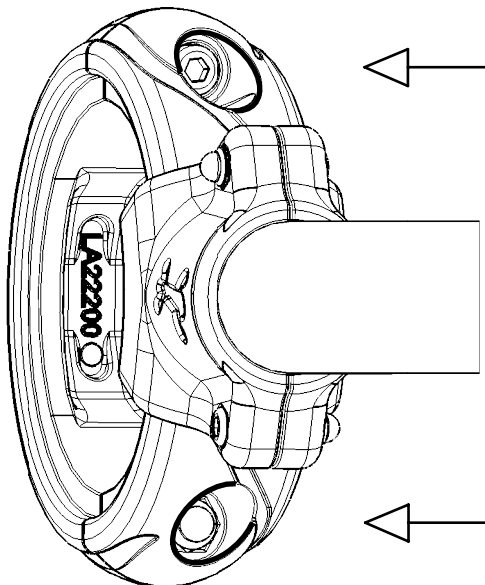
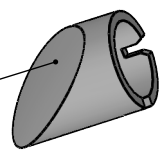


VEFBM6

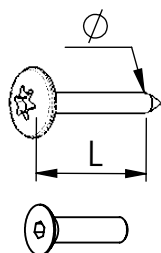




MI2508VX



MI2508VX



VBT 6 x 30
 \varnothing \nearrow \nwarrow L (mm)

VFHC



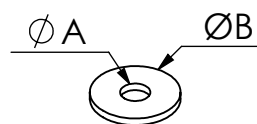
VEC M10
 \varnothing \nearrow



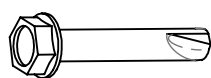
VEF



VEB



VR6x18
 $\varnothing A$ \nearrow \nwarrow $\varnothing B$

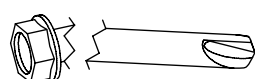


VTHA



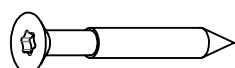
1000 - 1800 tr/min

Vitesse de rotation
 Rotation speed



14 N.m

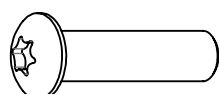
Couple de rupture
 Torque of break



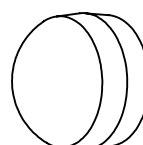
VWT



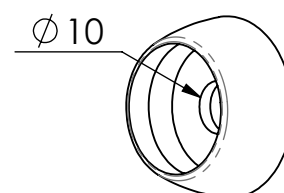
VGC



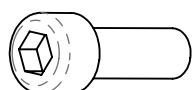
VCBHC



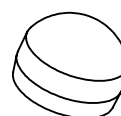
M10 440N



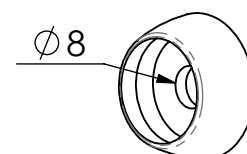
M10 310 N



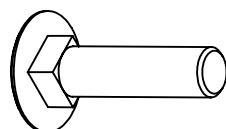
VBTR



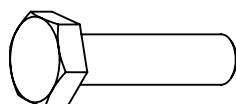
M8440N



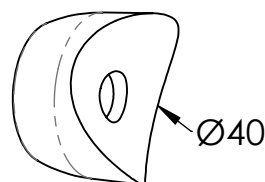
M8310N



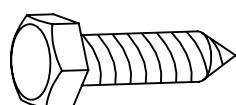
VTRCC



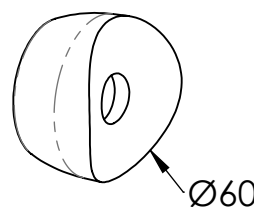
VTH



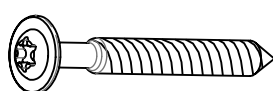
MI2503



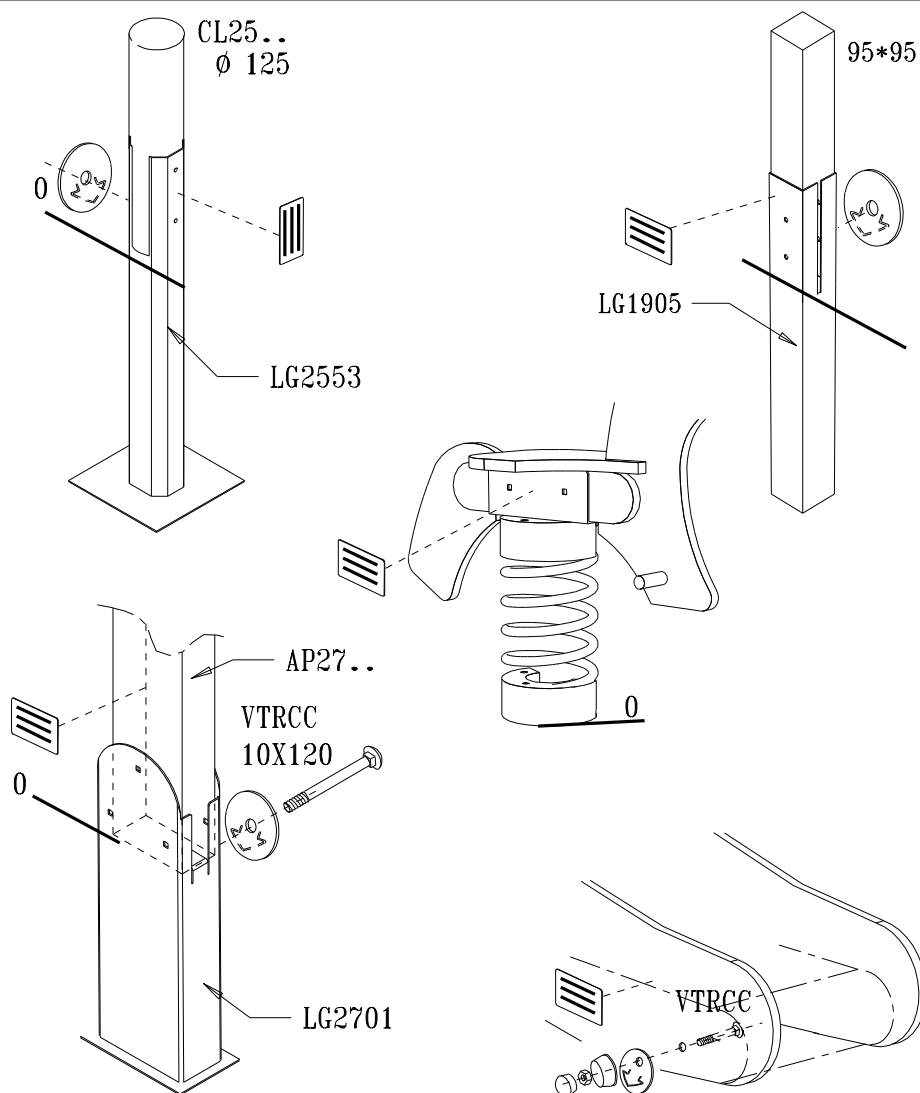
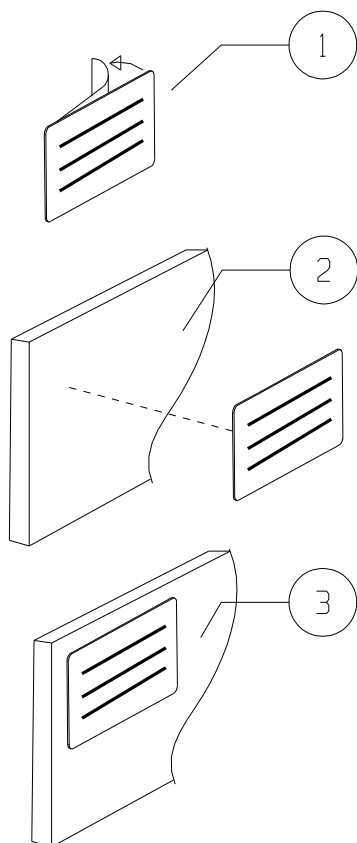
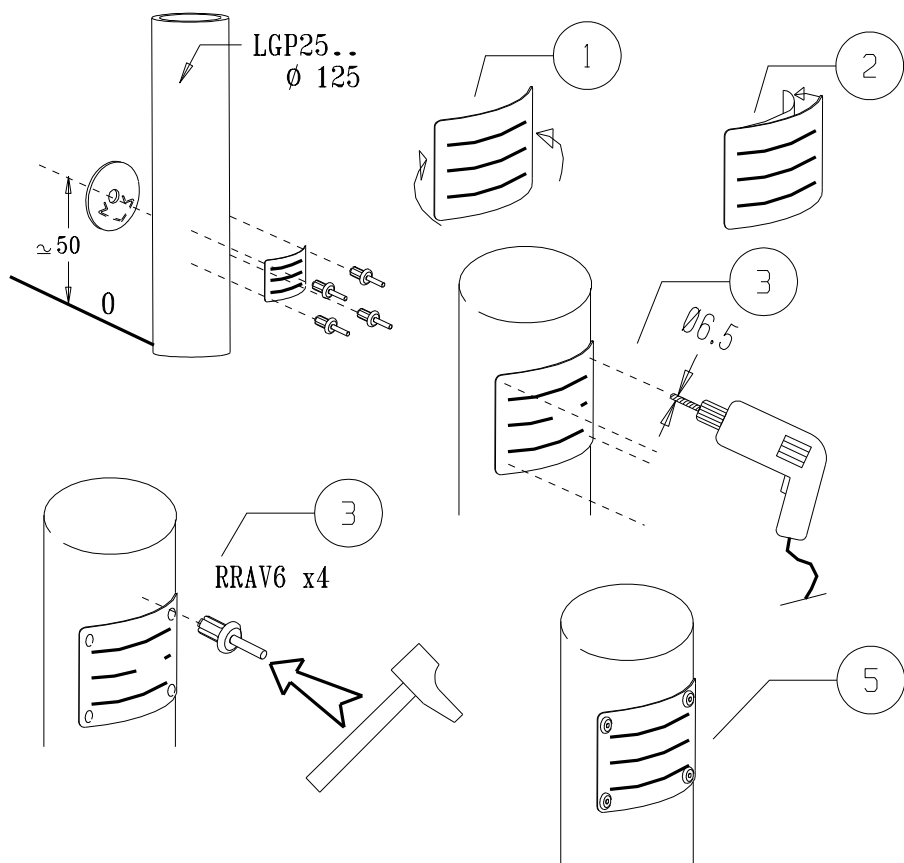
VTF



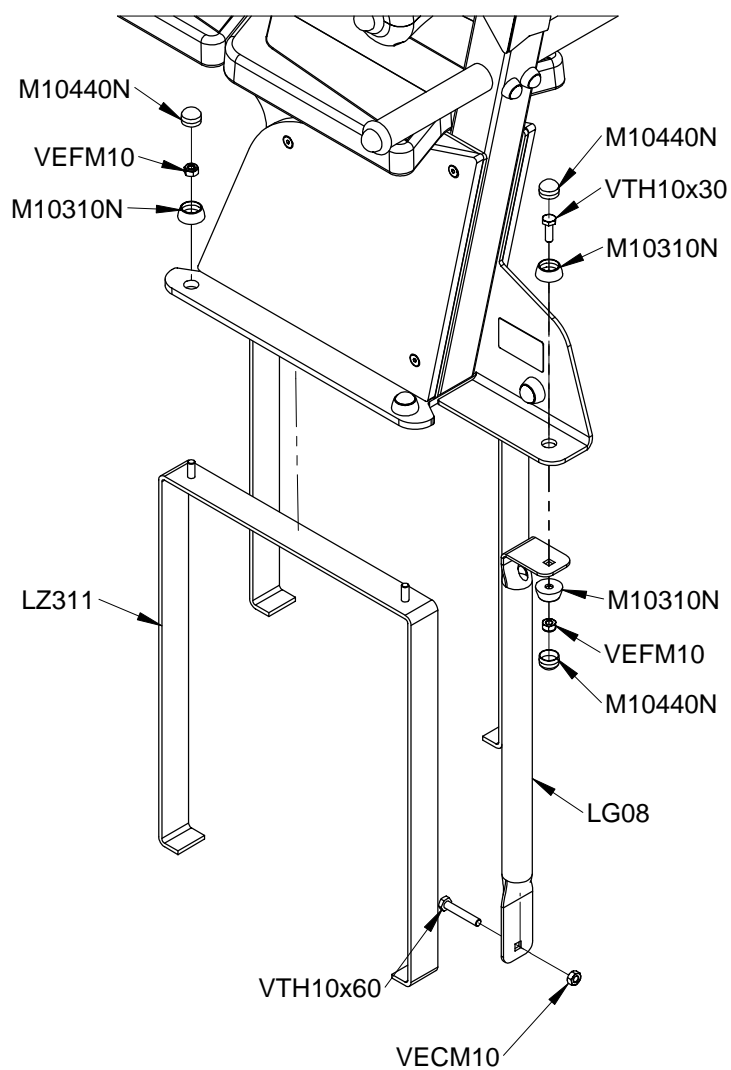
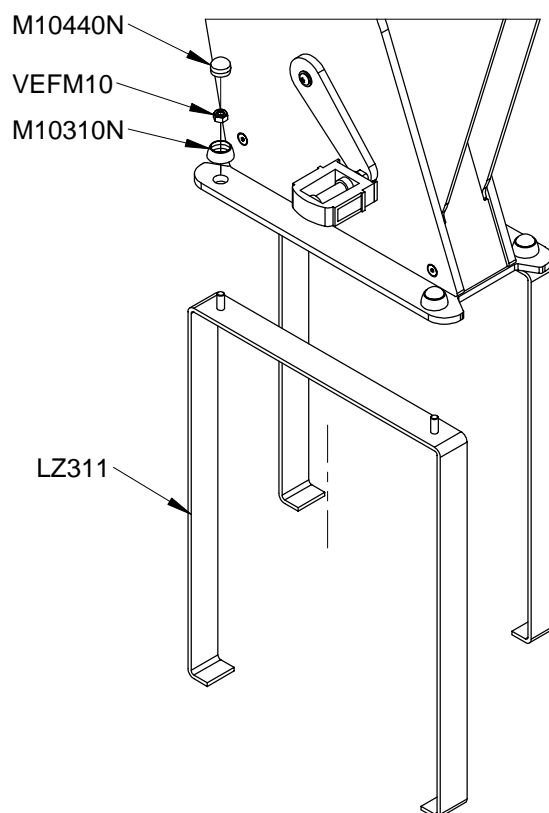
MI2701

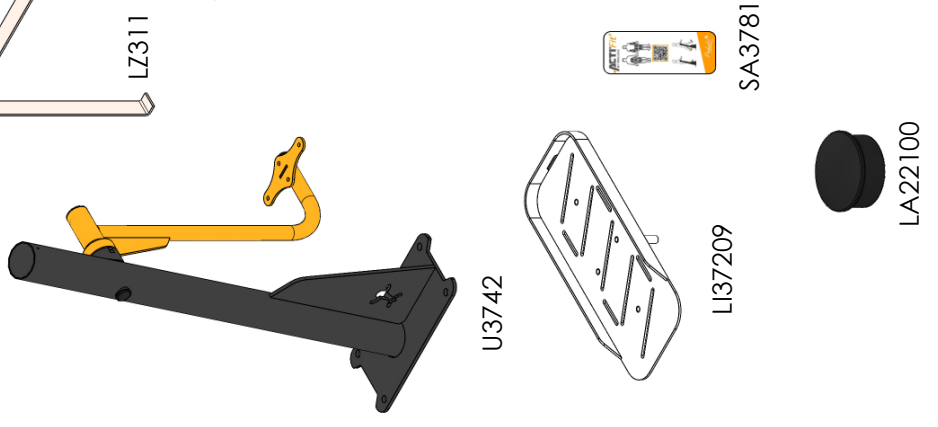
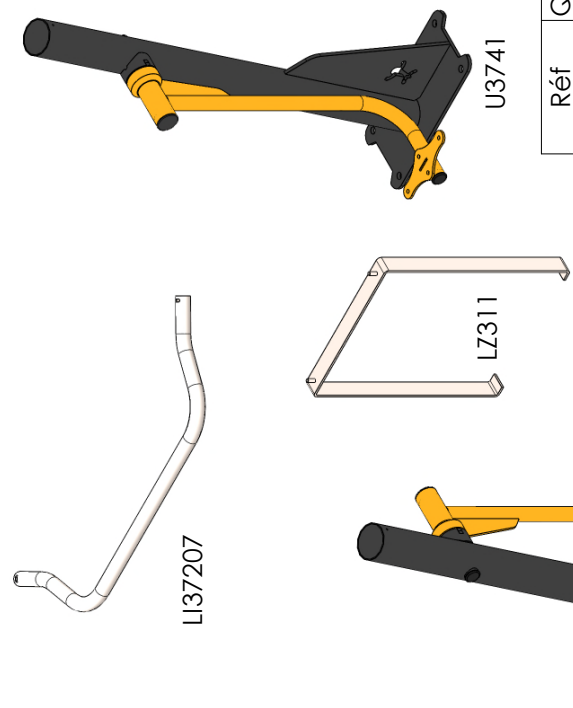
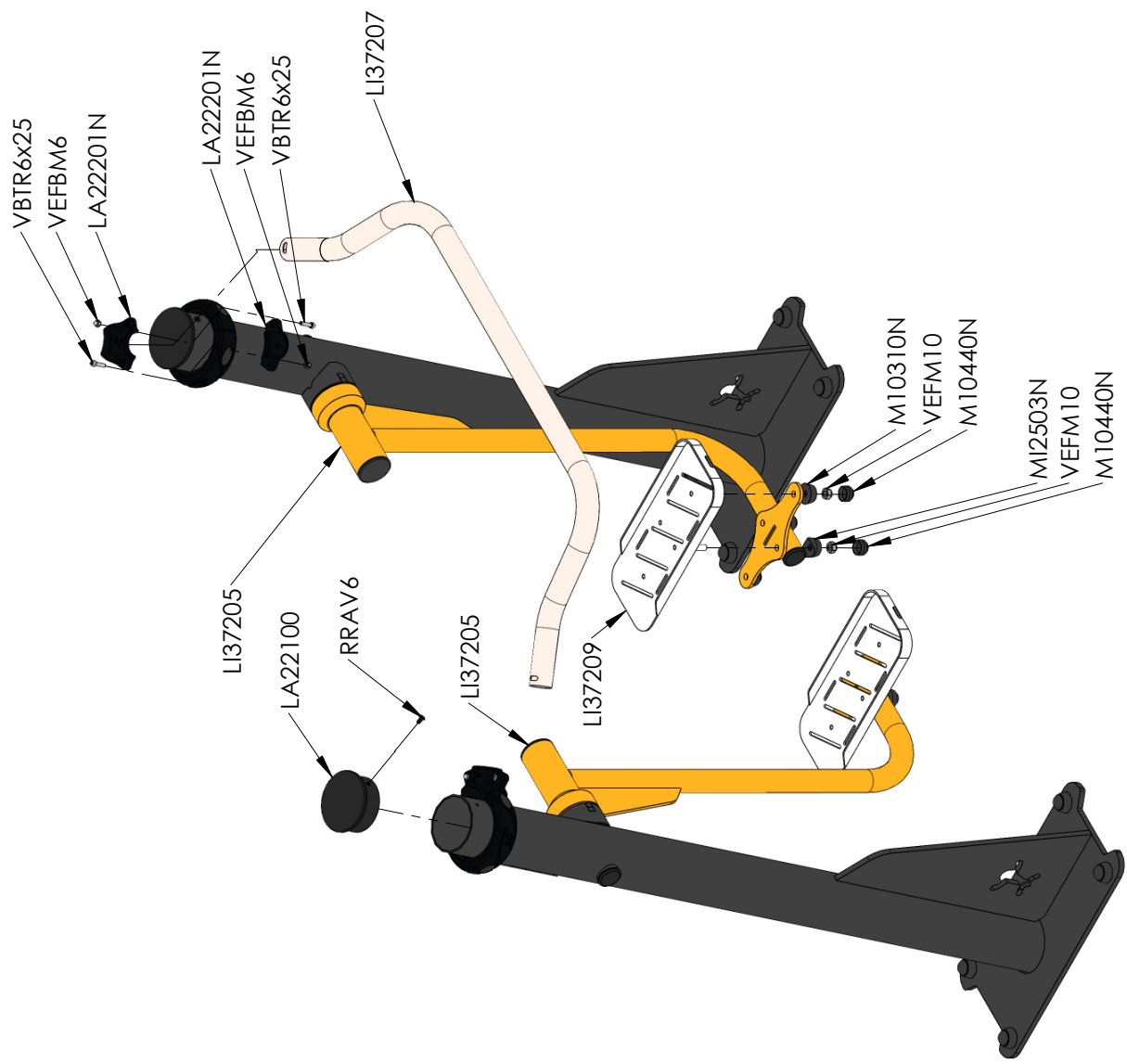


VBT



A





Réf	Qté
LA22100	2
LA22200N	4
LA22201N	4
LI37207	1
LI37209	2
LZ311	4
M10310N	12
M10440N	16
M12503N	4
M12508N	8
RRAV6	2
SA3781	1
U3741	1
U3742	1
VBTR6x25	4
VBTR8X45	4
VEFBM6	4
VEFBM8	4
VEFM10	16
VTH6x30A	2

